

Dieterich Buxtehude

# O Jesu mi dulcissime

BuxWV 88

*with reconstructed verse by Ton Koopman*



**Violino II**

*Nota bene*



Dieterich Buxtehude

# O Jesu mi dulcissime

BuxWV 88

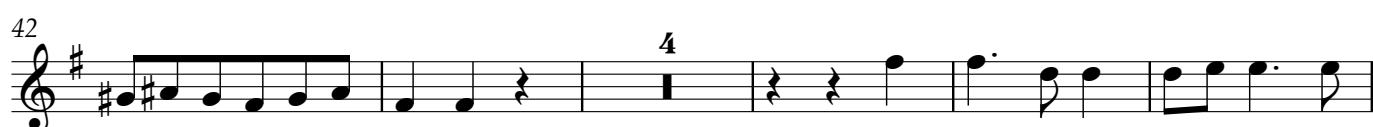
*with rconstructed verse by Ton Koopman*

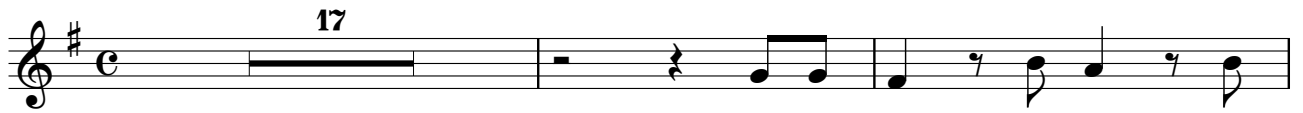
## 1. Sonata

The musical score for the Sonata is written for Violino II in G major (one sharp) and 3/4 time. It consists of five staves of music. The first staff begins with a treble clef, a key signature of one sharp (F#), and a 3/4 time signature. The melody starts with a half note G4, followed by quarter notes A4, B4, and C5. The second staff continues the melody with quarter notes D5, E5, and F#5, followed by a half note G5. The third staff features a series of eighth notes: G4, A4, B4, C5, D5, E5, F#5, and G5. The fourth staff continues with eighth notes: A4, B4, C5, D5, E5, F#5, and G5. The fifth staff concludes the piece with a half note G4, followed by quarter notes A4, B4, and C5, and a final half note G4.

## 2. O Jesu mi dulcissime – tacet

## 3. Tutti "O Jesu mi dulcissime"



**4.** *Quocumque loco fuero* / **5.** *Desidero te millies***6.** *Veni, Rex optime* (reconstructed verse)

*Repeat Tutti "O Jesu mi dulcissime"*